

Bleed / Cut Line

(Blue line)

If the background is a solid colour or a full background scan, please make sure to allow 60mm bleed. Solid colours or scans must end at the Bleed / Cut line.

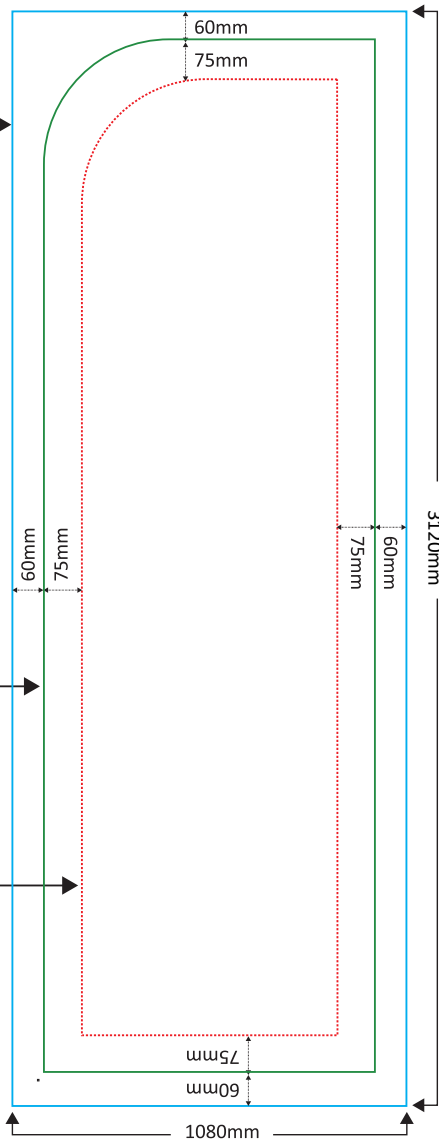
Seam Line

(Green line)

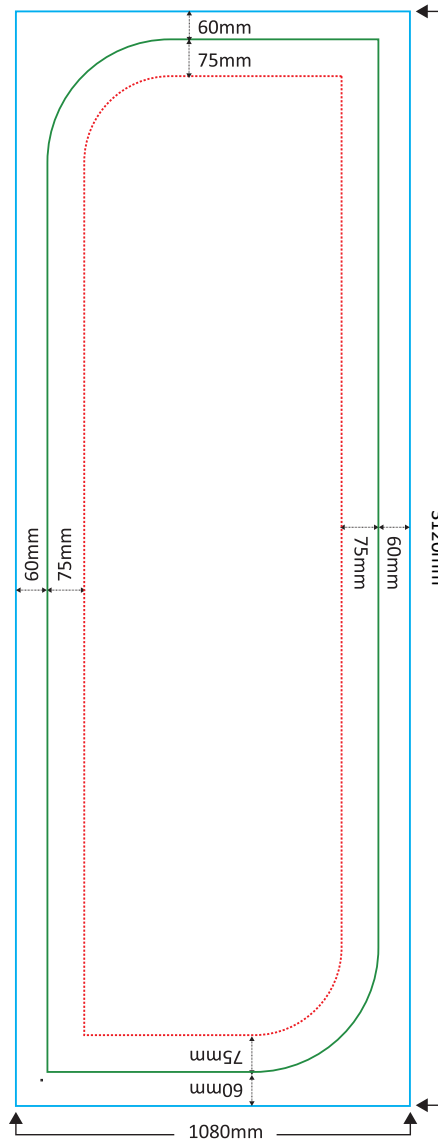
Safe Area

(Red line)

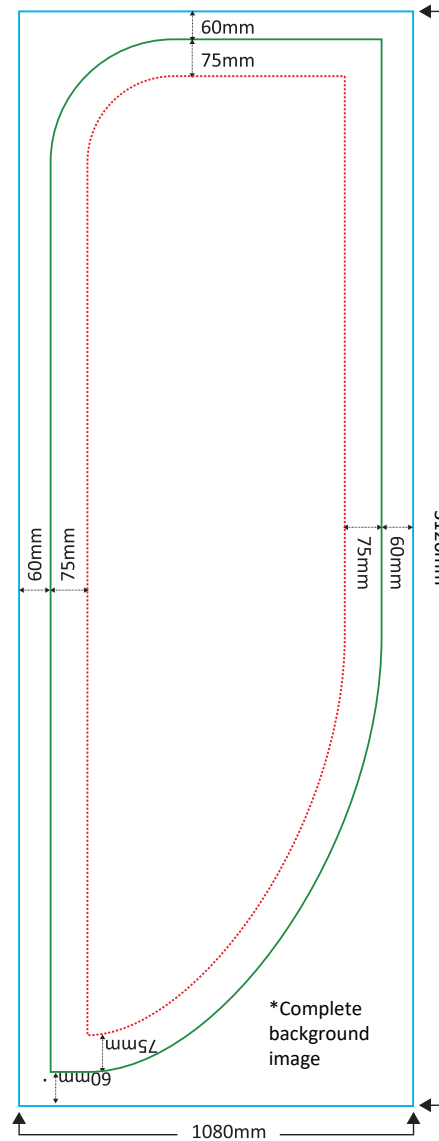
In order to avoid any vital logos or text from being cut, Please keep all logos and text within the red dotted line.



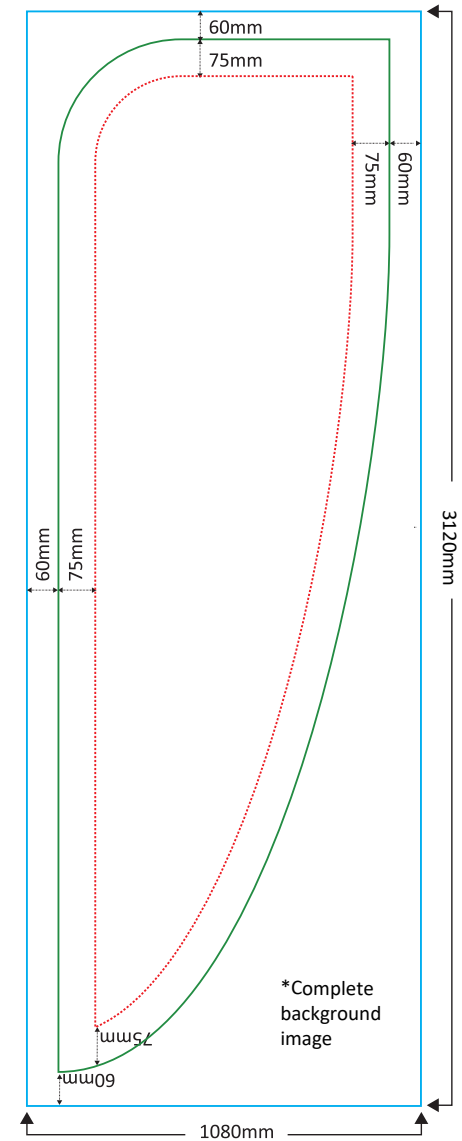
Straight Cut Bottom



Slight Curve Cut Bottom



Medium Curve Cut Bottom



Deep Curve Cut Bottom

*Complete background image

*Complete background image

Bleed / Cut Line

(Blue line)

If the background is a solid colour or a full background scan, please make sure to allow 60mm bleed. Solid colours or scans must end at the Bleed / Cut line.

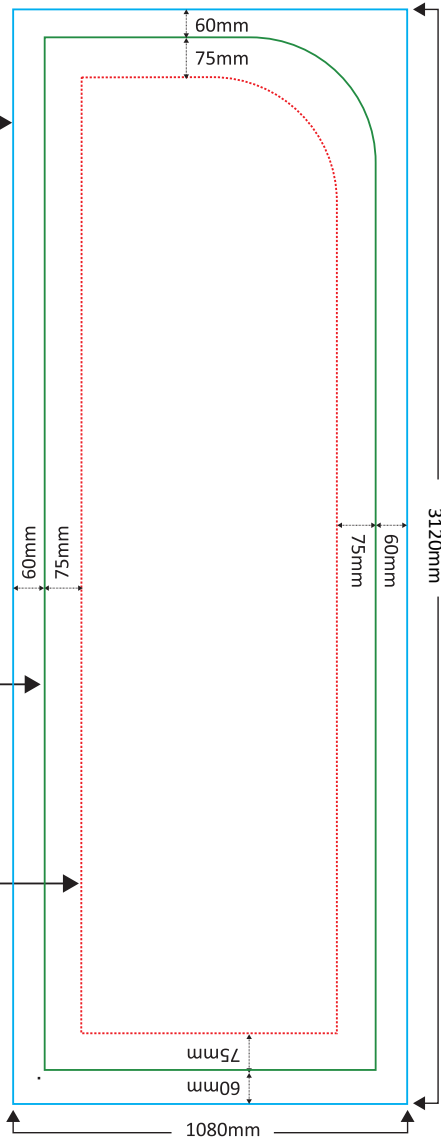
Seam Line

(Green line)

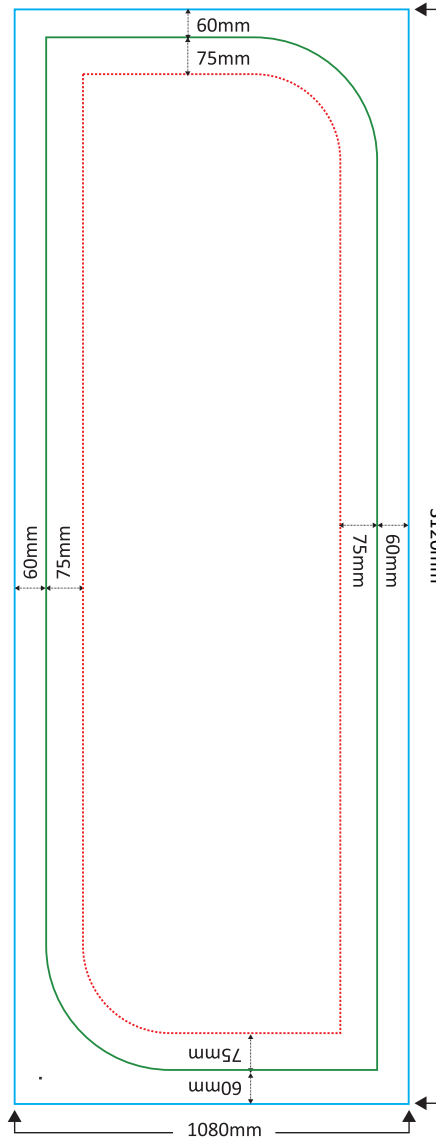
Safe Area

(Red line)

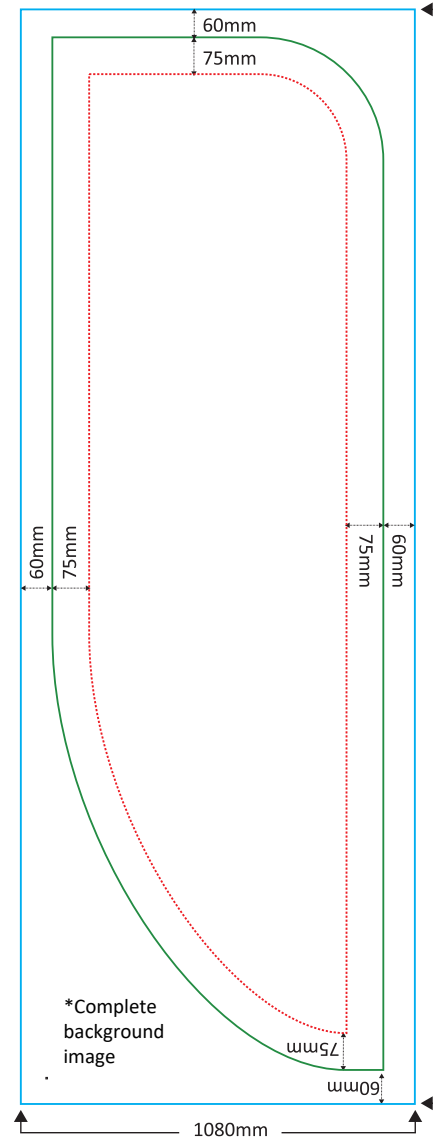
In order to avoid any vital logos or text from being cut, Please keep all logos and text within the red dotted line.



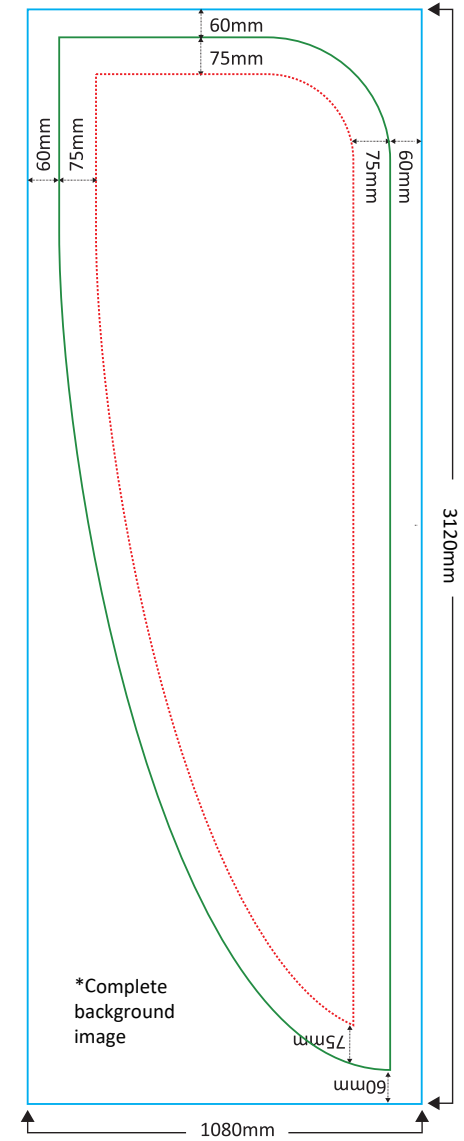
Straight Cut Bottom



Slight Curve Cut Bottom



Medium Curve Cut Bottom



Deep Curve Cut Bottom